



GAT MONTHLY MEMBERSHIP PROGRESS REPORT

Results as of: 3/31/2021

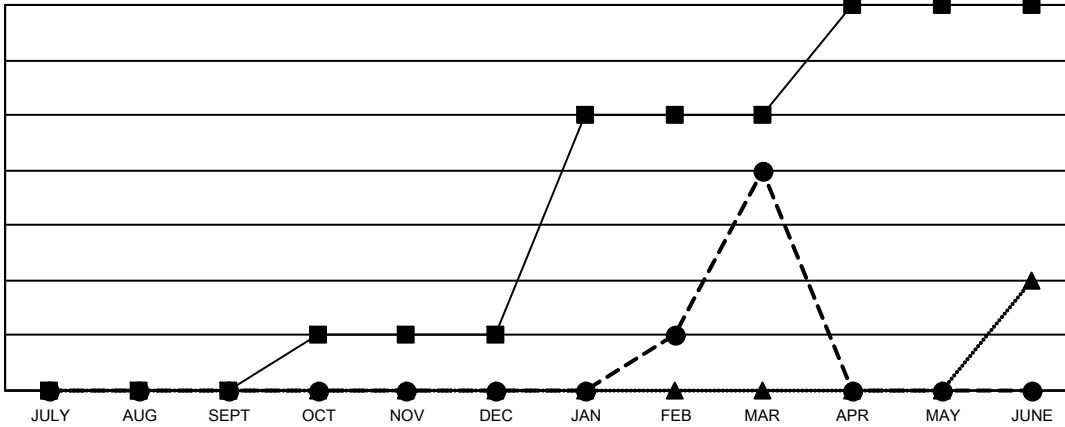
Multiple District 202

LOCATION: NEW ZEALAND

| Clubs | | | |
|-----------------------|---------------|-----------|---------------|
| RESULTS FOR 2020-2021 | | | |
| QUARTER | NEW CLUB GOAL | NEW CLUBS | DROPPED CLUBS |
| JULY/AUG/SEPT | 0 | 0 | 4 |
| OCT/NOV/DEC | 1 | 0 | 5 |
| JAN/FEB/MAR | 4 | 4 | 5 |
| APR/MAY/JUNE | 2 | 0 | 0 |

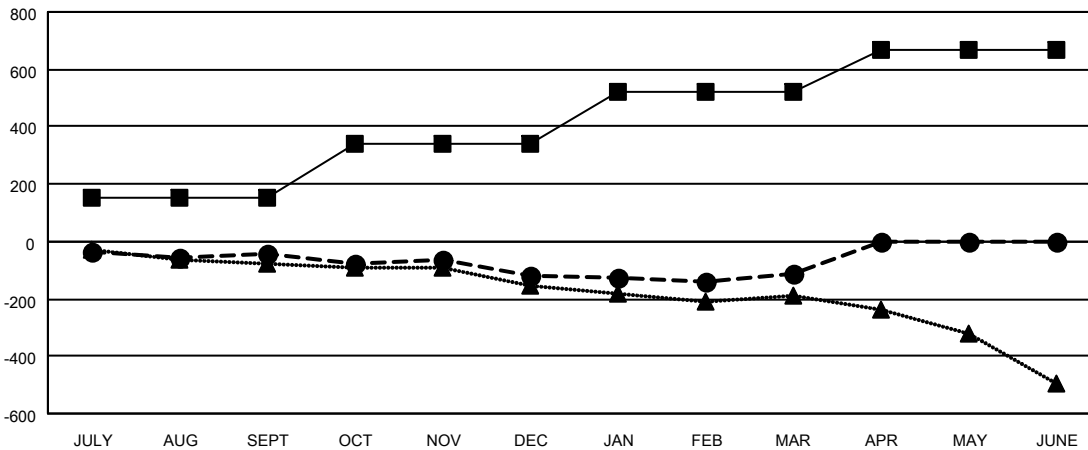
| Members | | | |
|-----------------------|------------------------|----------------------|--|
| RESULTS FOR 2020-2021 | | | |
| QUARTER | MEMBER GROWTH NET GOAL | MEMBER GROWTH ACTUAL | DROPPED MEMBERS ACTUAL (including transfers) |
| JULY/AUG/SEPT | 154 | 194 | 205 |
| OCT/NOV/DEC | 185 | 211 | 267 |
| JAN/FEB/MAR | 181 | 214 | 174 |
| APR/MAY/JUNE | 146 | 0 | 0 |

GOALS AND ACTUAL NEW CLUBS CUMULATIVE



- - CURRENT YEAR GOALS FOR NEW CLUBS
- - CURRENT YEAR ACTUAL NEW CLUBS
- ▲ - LAST YEAR ACTUAL NEW CLUBS

GOALS AND ACTUAL MEMBERS CUMULATIVE



- - MEMBER GROWTH NET GOAL
- - MEMBER GROWTH ACTUAL
- ▲ - LAST YEAR MEMBERSHIP ACTUAL

| | |
|------------------------|------------|
| DROPPED CLUBS: 14 | |
| <u>DROPPED MEMBERS</u> | |
| DECEASED | 90 |
| CLUB CANCELLED | 11 |
| OTHER | 545 |
| TOTAL | 646 |

198 CLUBS OF 341 ADDED 1 OR MORE NEW MEMBERS

[CLICK HERE FOR CUMULATIVE MEMBERSHIP DATA](#)

| | |
|---------------------------------|----------------|
| <u>GENDER DISTRIBUTION</u> | |
| MALE | 5,925 (68.09%) |
| FEMALE | 2,777 (31.91%) |
| TOTAL FAMILY UNIT MEMBERS | 749 |
| FAMILY MEMBERS PAYING HALF DUES | 378 |